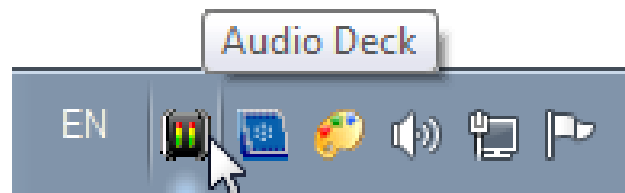


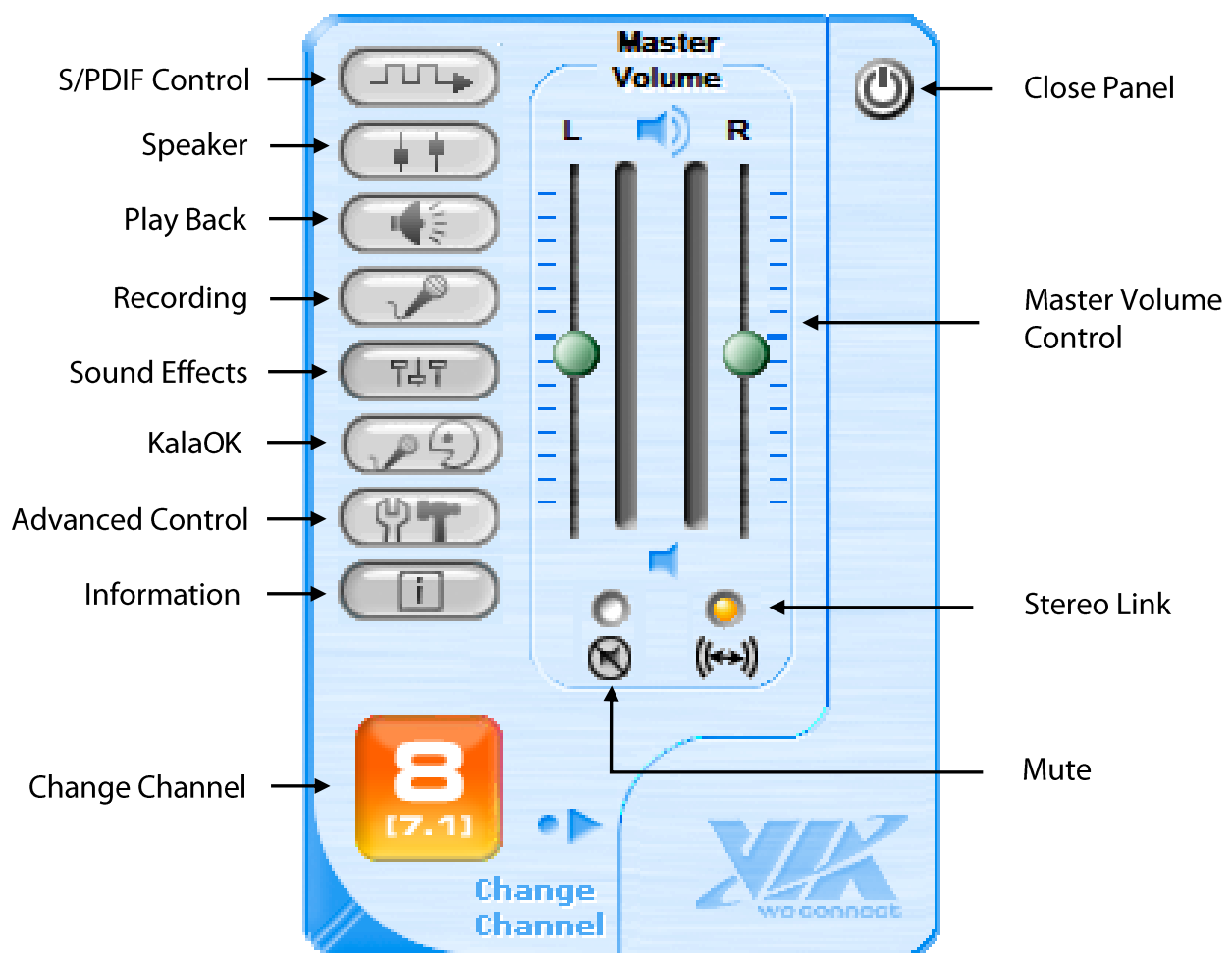
Audio Deck is an easy to use, user friendly audio utility that allows you to adjust audio outputs, recording, sound effects and surround sound support.

Quick Start Icon

During driver installation, the Audio Deck quick start icon is placed in the taskbar by the system clock. Click on the icon to open the Audio Deck Control Panel.



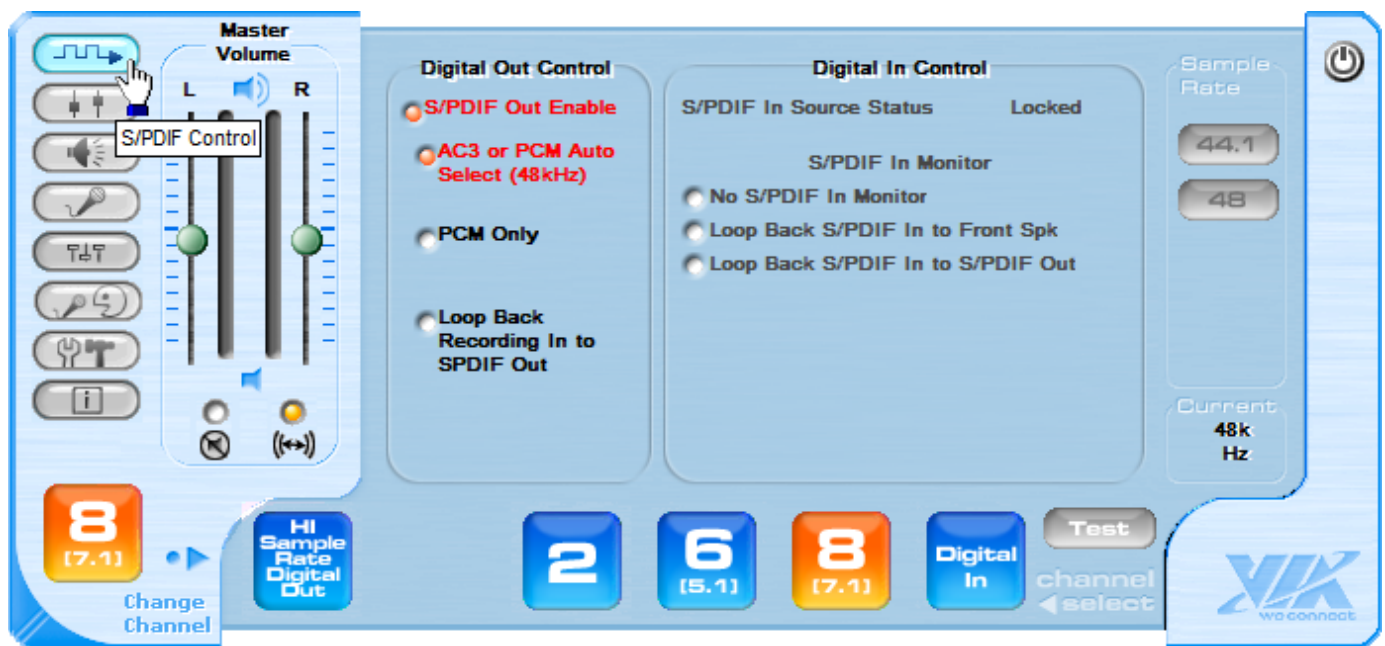
Control Panel



Control Panel

- S/PDIF Control: Sets Digital output signal source.
- Speaker: Sets the volume for the various speakers.
- Play Back: Adjusts the volume of each output device.
- Recording: Selects the recording source and controls it's recording level.
- Sound Effects: Includes Equalizer with 4 presets and you can customize your own settings, QXpander, Environments. This tab appears only after selecting Immezio 3D Effects Enable in the Advanced Controls window. *Important: Sound Effects not supported in Windows XP (64-bit) and Windows Server 2003 (64-bit).*
- KalaOK: Adjusts mid-range sound volume - Karaoke enhancement.
- Advanced Control: Sets sound parameters for the sound card.
- Information: System and driver information is displayed here.
- Change Channel: Displays the current channel mode. Click any button to access Channel Setup to change channel mode. *Note: 4-channel mode is supported in XP and Windows Server 2003.*
- Master Volume Control: Adjusts the system volume of left and right channels.
- Stereo Link: Adjusts left and right channels individually.
- Mute: Turns the system sound On/Off immediately.
- Close Panel: Click to close the Control Panel.

S/PDIF Control



Digital Out Control

- **S/PDIF Out Enable:** Turns ON/OFF the Optical Digital Out.
- **AC3 or PCM auto select (48kHz):** With this setting all of the digital sources are played over the digital output. This setting allows compatibility with all sounds formats such as MP3, audio CD, DVD movies and general movie files. This setting is also used when you want to send encoded AC3 streams (Dolby Digital / DTS) to an external decoder.
- **PCM Only:** This setting is only for digital sources, which are played over digital output. In PCM mode you can select Hi Sample Rate Digital Out on the bottom of the control panel to apply 24-bit/96kHz of high quality Digital Out.
- **Loop Back Recording In to S/PDIF Out:** This setting converts external Analog In such as Mic and Line In to Digital Out. During this mode recorded sound is outputted, not playback sound.

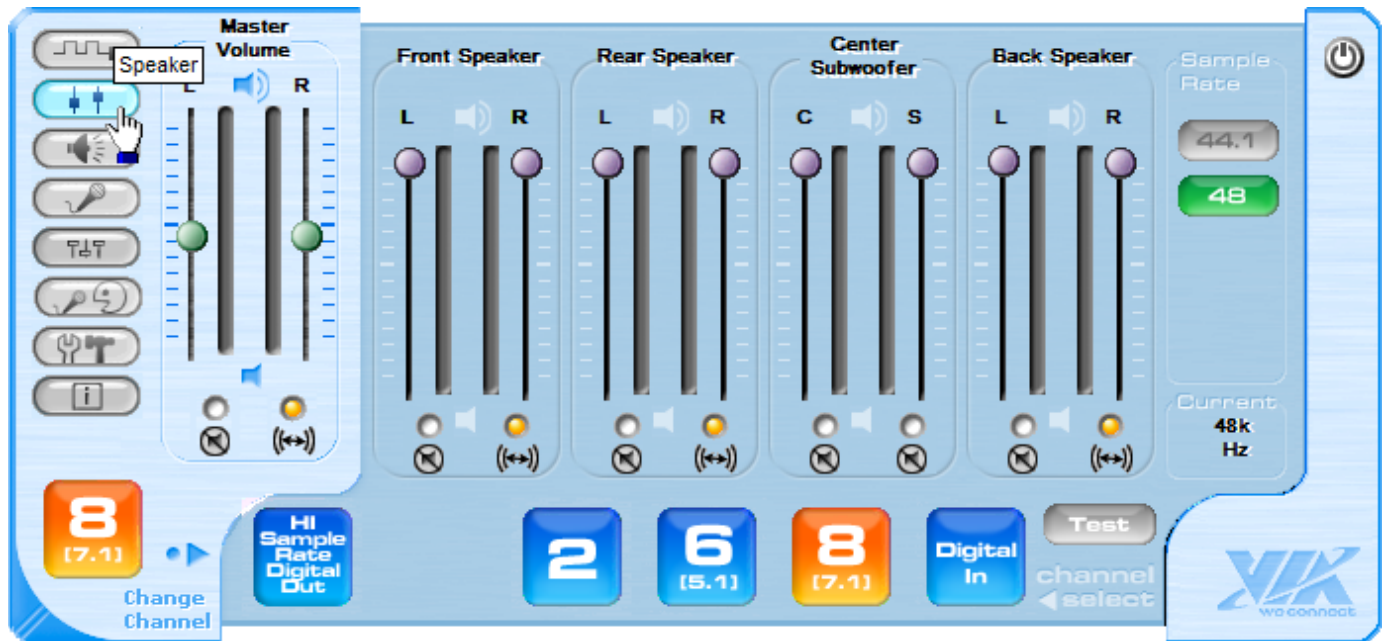
Digital In Control

To activate the Digital Input function, first click on the Digital In icon.

- **No S/PDIF in Monitor:** Silences the sound from the S/PDIF input from all of the analog outputs.
- **Loop Back S/PDIF In to Front Speaker:** Sends the sound from the S/PDIF input to the front speakers so it can be heard.
- **Loop Back S/PDIF In to S/PDIF out:** Routes the digital signal from the S/PDIF input to the S/PDIF output.

Speaker

Here you can set the volume for the various speakers. All speakers can be muted by clicking the check button above the speaker icon.



- Front Speaker: Controls volume of front speakers.
- Rear Speaker: Controls volume of rear speakers.
- Center / Subwoofer: Controls volume of center and subwoofer speakers.
- Back Speaker: Controls volume of back surround speakers.

Speaker Test

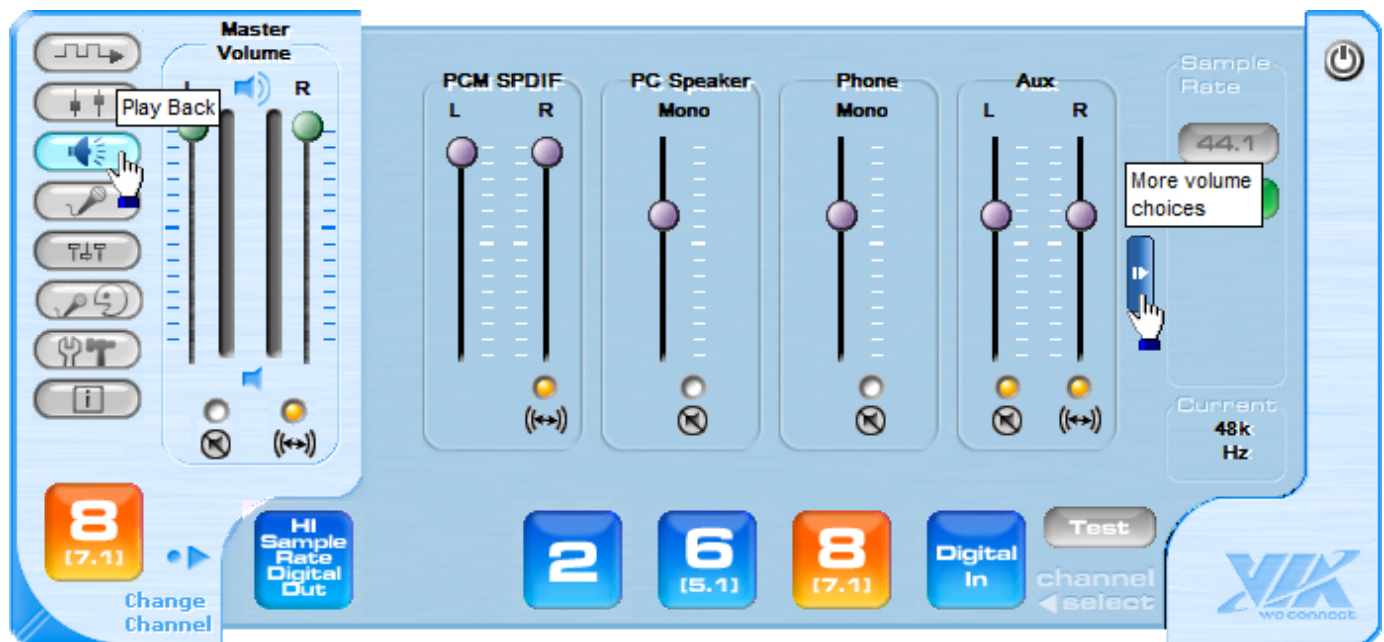
Here you can set output channel in accordance with your speaker.



- **Speaker Setting:** Click on the desired icon to change the speaker mode. The active mode will display to the left of the menu.
- **Speaker Test:** Tests the position of your 2, 6 or 8 channel speaker system. Click on a speaker icon and you will hear a short note. Speaker Test not intended for Optical S/PDIF or surround sound speakers operating through a digital decoder box.

Playback

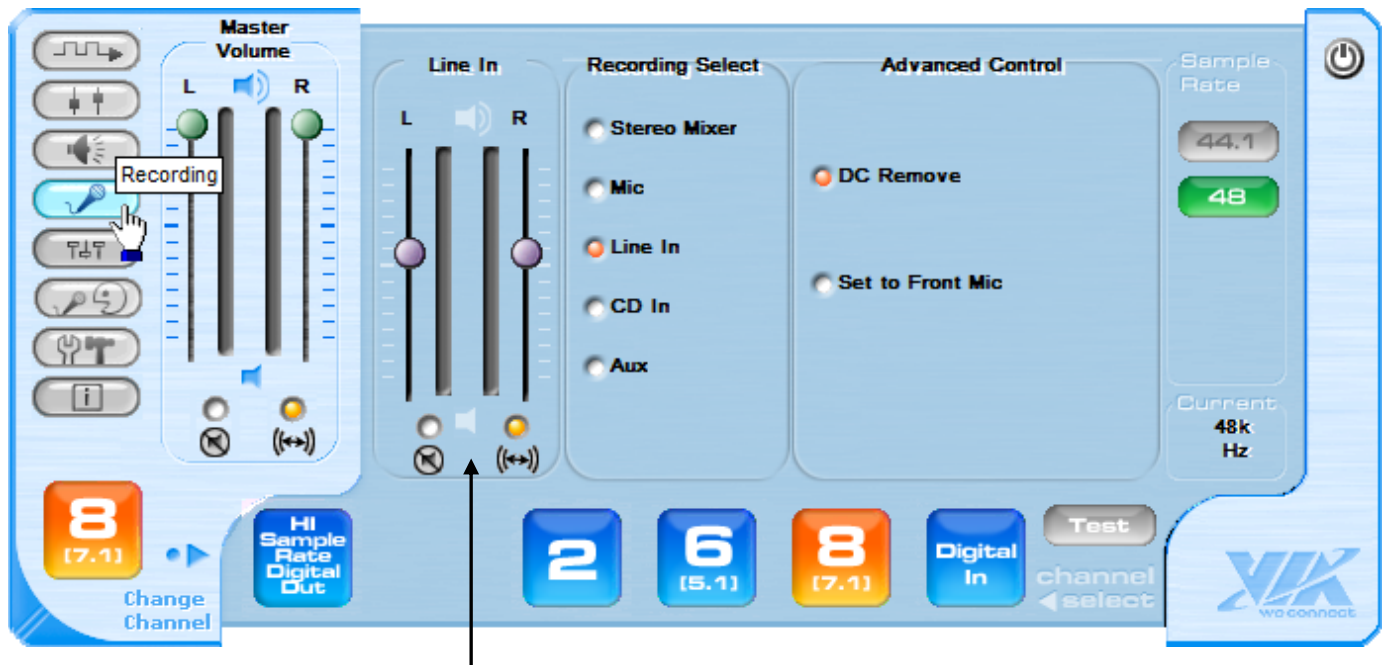
Here you can adjust the playback settings for various resources.



- PCM SPDIF: Sets the volume for S/PDIF Out.
- CD In: Sets the volume for analog output of CD In.
- Line In: Sets the volume for analog playback of Line In sound (no playback through Digital Optical Out).
- MIC: Sets the volume for microphone playback.

Recording

In the recording menu you can choose which source the sound card will use to record.

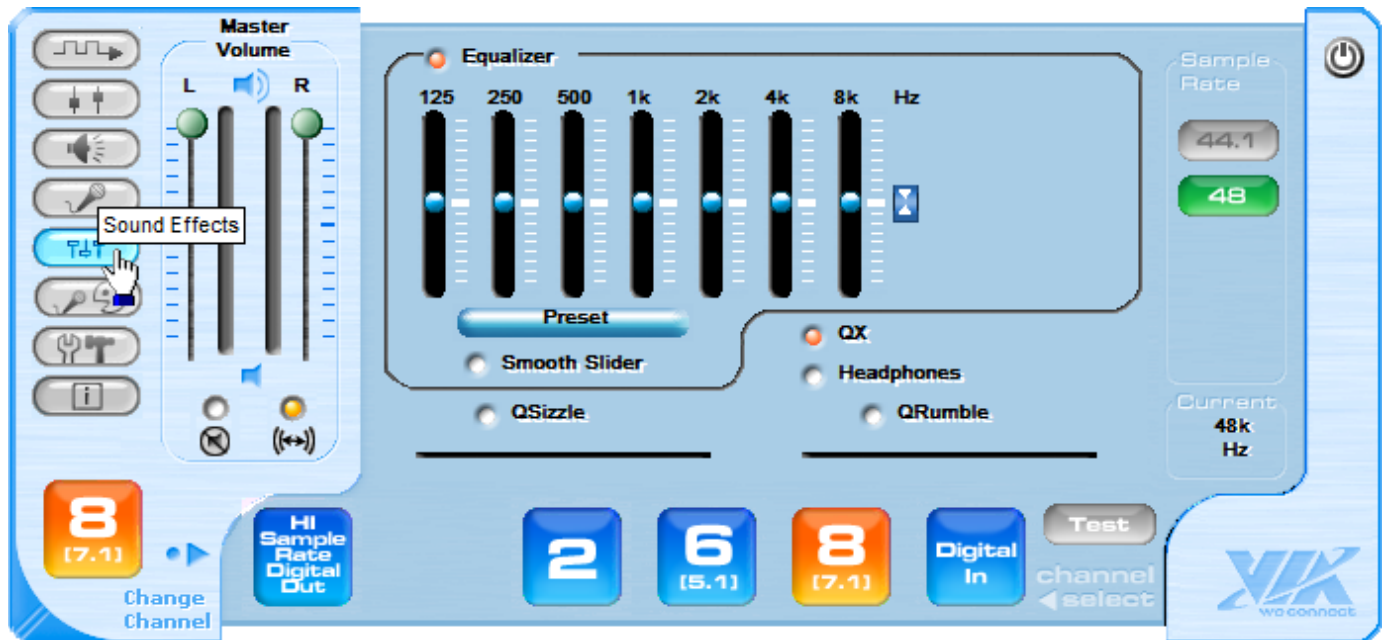


Source Volume Control

- Source Volume Control: Set the volume for recording signal which the user has selected.
- Recording Select: Here you can select the sound source for recording.
Note: To record Windows playback sounds, select Stereo Mixer.
- DC Remove: Reduces interference when recording through the microphone.

Sound Effects

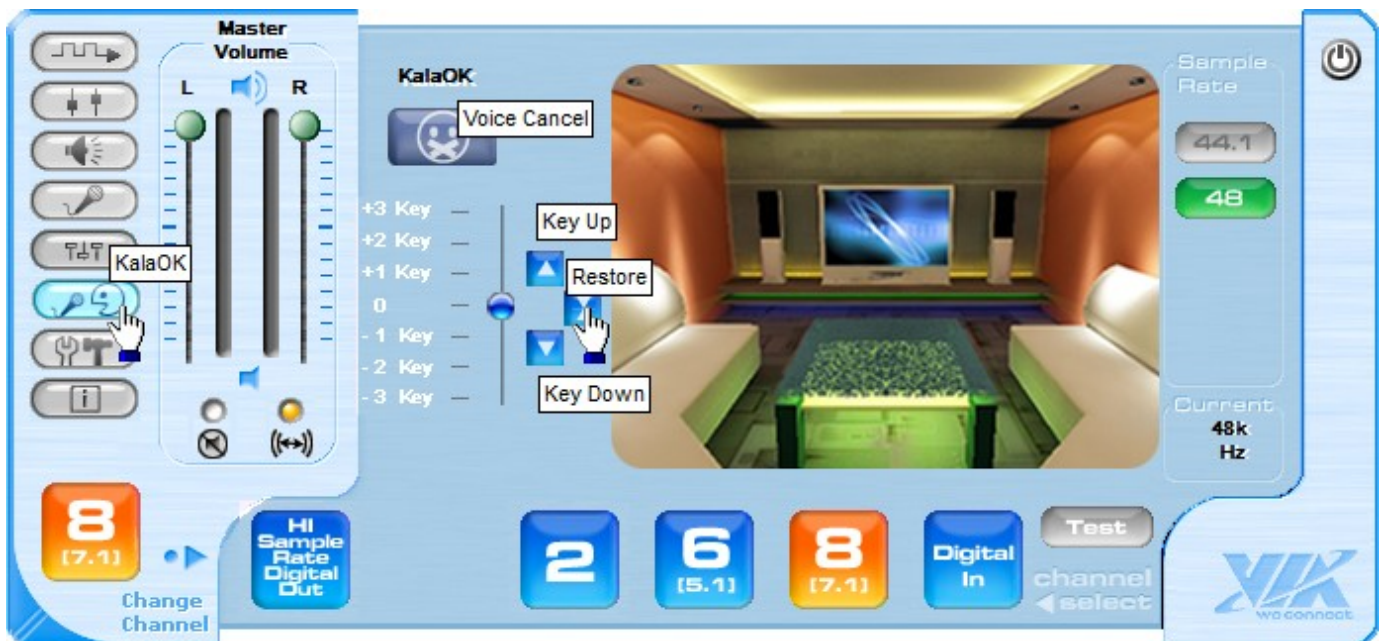
This panel is enable by selecting Immezio 3D Effect Enable in Advanced Controls. **Note:** Not supported in XP (64-bit) & Server 2003 (64-bit).



- Equalizer: You can set up a frequency band of the sound.
- Preset: Select from the pre-configured equalizer settings.
- QX: As a 2 channel virtual surround feature, gets phase of stereo output sound into midway or extends the phase for being spatial.
- Headphones: Virtual sound source positioning with left and right are controlled according to headphone use environment. You can be used if you activate the QX.
- QSizzle: It emphasizes a high-pitched frequency.
- QRumble: It emphasizes a low-pitched frequency.

KalaOK

KalaOK: Adjusts volume of mid-range sounds.



- Voice Cancel: Removes vocal range from playback of music.
- Key Up / Key Down: Controls the height (Pitch) of the sound.
- Restore: Restores default height (Pitch) of the sound.

Advanced Controls

In the advanced controls menu you can set system parameters for the Sound Card.



- Language: Select Auto, English, Chinese, Russian or Japanese.
- Center/LFE Swap: Swap center speaker and sub-woofer speaker outputs.
- Stereo Expander: This setting duplicates the front channel stereo sound to the other surround sound channels.
- Smooth GUI Mode Enable: Output level meter is shown. If it is unchecked, CPU share is slightly low when you play a source.
- Immezio 3D Effects Enable: Offers 3D audio for computer games or musical playback in multi-channel mode. **Note:** Immezio 3D Effects not supported in Windows XP (64-bit) and Windows Server 2003 (64-bit).

VIA Envy24 Family Audio Deck User Guide

Information

English

System and driver information is displayed here.

