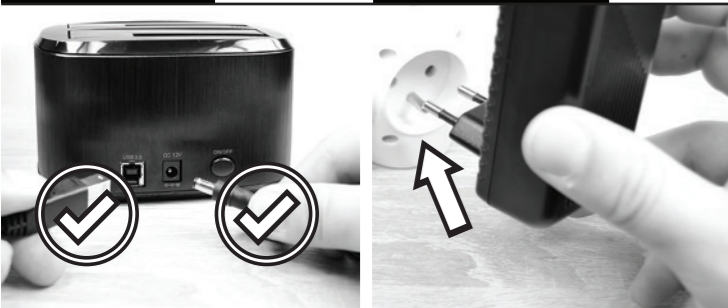
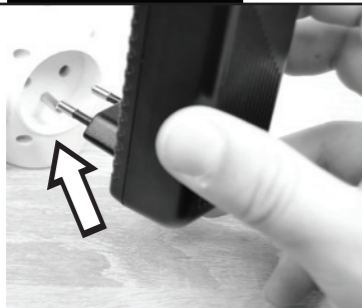




1a. CONNECT USB & POWER



1b. PLUG INTO POWER OUTLET



2. PLUG TO PC USB PORT



3a. INSERT HDD (OPTION A)

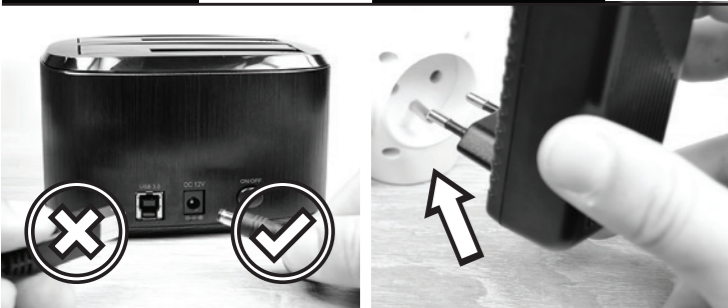


4. PRESS ON/OFF BUTTON FOR 1 SEC

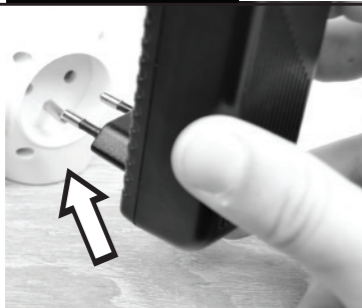


5. AUTOMATIC INSTALLATION

1a. CONNECT POWER ONLY



1b. PLUG INTO POWER OUTLET



3. INSERT SOURCE HDD A



6a. WAIT 10 SEC



6b. PRESS CLONE BUTTON FOR 3 SEC



7. WAIT FOR PERMANENT LIGHTING OF ALL LEDs



PL

SPÓSÓB POSTĘPOWANIA PRZY INSTALACJI - PODŁĄCZENIE
1. Proszę podłączyć zasilanie do złączki DC 12V...

PT

PROCESSO DE INSTALAÇÃO - CONEXÃO
1. Conecte a fonte de alimentação ao conector DC 12V...

RO

PROCES DE INSTALARE - CONECTARE
1. Conectați alimentarea la conectorul DC 12V...

RU

ПОРЯДОК УСТАНОВКИ - ПОДКЛЮЧЕНИЕ
1. Подключить источник питания к разъему DC 12 В...

SK

INSTALAČNÝ POSTUP - PŘIPOJENÍ
1. Připojte napájení do konektoru DC 12V...

SWE

INSTALLATIONS - SÖRJÄRNING
1. Koppla strömförseringen till DC 12V-kontakt...

TR

KURULUM PROSEDÜRÜ - SÖRJÄRME
1. Güç kaynağını DC 12V konektöre bağlayın...

BG

РЪКОВОДСТВО ЗА ИНСТАЛАЦИЯ - СЪВЪРЗАВАНЕ
1. Свържете захранването към конектор DC 12V...

CN

安装程序-连接
1.将电源线连接到直流 12V 接头。使用 12V/2.5A 的 AC/DC 适配器供电。

TECHNICAL SPECIFICATIONS

INPUT INTERFACE
USB 3.2 Gen 1 (USB 3.0) - USB 2.0
5000 - 480 Mbit/s (SuperSpeed - HighSpeed)
USB Mass Storage Class
USB Type B female connector (on the docking station)
USB Type A male connector (on the cable)

OUTPUT INTERFACE

SERIAL ATA specification revision 3.0
6 - 3 - 1.5 Gbit/s (SATA/600 - SATA/300 - SATA/150)
All 2.5" & 3.5" SATA III / II / I HDD disks supported with all capacities
2x 22-pin SATA data and power female
5 Gbit/s theoretically (given by USB input)

POWER SUPPLY

Power through included power adapter (12V/2.5A)

SIZE NET WEIGHT

142 x 102 x 80 mm - 330 g - 70 cm disconnectable cable

CLONING FEATURES

Cloning takes place without connecting the station to a computer.
The target disk must have the same or larger capacity as the source disk, otherwise cloning cannot be started.
Both hard disks and SSDs can be cloned.
Cloning starts by pressing and holding the CLONE button for minimally 3 seconds.
SSD cloning speed up to 300 MB/s.
The total disk cloning time depends on the capacity of the source disk, not the amount of disk data.

OTHER FEATURES

UASP (USB Attached SCSI Protocol) and BOT (Bulk-Only Transport)
SSD/HDD boot support in docking station
AUTOMATIC INSTALLATION
Plug & Play - Hot Plug - S.M.A.R.T.
Auto Spin-down - HDD Turn Off
Aluminum body - Screwless mounting

IT

CLONAZIONE/DUPLICAZIONE DEL CONTENUTO DEL DISCO-FUNZIONE CLONE
1. Collegare l'alimentazione al conettore DC 12V...

NL

KLOONEN/DUPLICEREN VAN SCHIJFHOUT - KLOONFUNCTIE
1. Sluit de voeding aan op de DC 12V-connector...

PL

KLONOWANIE/DUPLIKOWANIE ZAWARTOŚCI DYSKU-FUNKCJA KLON
1. Proszę podłączyć zasilanie do złączki DC 12V...

PT

CLONAR/DUPLICAR CONTEÚDOS DO DISCO - FUNÇÃO DE CLONAGEM
1. Conecte a fonte de alimentação ao conector DC 12V...

RO

KLONAREA/DUPLICAREA CONȚINUTULUI DISCULUI-FUNCȚIA CLONE
1. Conectați alimentarea la conectorul DC 12V...

RU

КЛОНИРОВАНИЕ/ДУБЛИРОВАНИЕ СОДЕРЖАНИЯ ДИСКА-ФУНКЦИЯ КЛОН
1. Подключить источник питания к разъему DC 12 В...

SK

KLONOVANIE/DUPLICÁCIA OBSAHU DISKU - FUNKCIA KLON
1. Připojte napájení do konektoru DC 12V...

SWE

CLONA /DUPLICERA DISK INNEHÅLL - CLONFUNKTION
1. Koppla strömförseringen till DC 12V-anslutningen...

TR

DISK İÇERİĞİNİ/DUŞİRLİPİNE KLONLAMA/ŞOĞALTMA - KLONLAMA İŞLEMİ
1. Güç kaynağını DC 12V konektöre bağlayın...

BG

КЛОНИРАНЕ/ДУБИРИРАНЕ СОДЪРЖАНИЕТО НА ДИСКА-ФУНКЦИЯ „CLONE“
1. Свържете захранването към конектор DC 12 V...

FOR DETAILED INFORMATION GO TO PAGE: www.axagon.eu



LED INDICATION

2x blue LED - each for one disk, disk connection (permanently on), data transmission (flashes)
4x LED 25%-50%-75%-100% - cloning takes place (flashes), cloning finished (permanently lit)
Green LED - power supply turned on (permanently on)

OS SUPPORTED

WINDOWS XP - Vista - 7 - 8 - 8.1 - 10 & later
Server 2008 - 2012 - 2016 & later
32&64bit versions supported
OS X 10.x & later - Linux 2.6.x & later

INFO

HDD B目标磁盘大小必须等于或者大于 HDD A 源磁盘。
HDD B目标容量大于 HDD A 源盘，不会分配目标磁盘的剩余空间。
在 Windows 中，可以在磁盘管理器中管理未分配的 (HDD B) 磁盘。
HDD B目标磁盘是 HDD A 源磁盘的副本，它可以获取源磁盘的 ID。因此，如果复制后两个磁盘都连接到计算机，Windows 将关闭其中一个磁盘。关闭的磁盘可以在 Windows 中磁盘管理器中再次切换到联机模式。

AR

يجب أن يكون حجم القرص المصدر HDD B مساوياً أو أكبر من حجم القرص المصدر HDD A
يجب أن يكون حجم القرص الهدف HDD B مساوياً أو أكبر من حجم القرص المصدر HDD A
يجب أن يكون حجم القرص الهدف مساوياً أو أكبر من حجم القرص المصدر HDD A
يجب أن يكون حجم القرص الهدف مساوياً أو أكبر من حجم القرص المصدر HDD A