



USER MANUAL

USB TO **SERIAL** ADVANCED **ADAPTER**

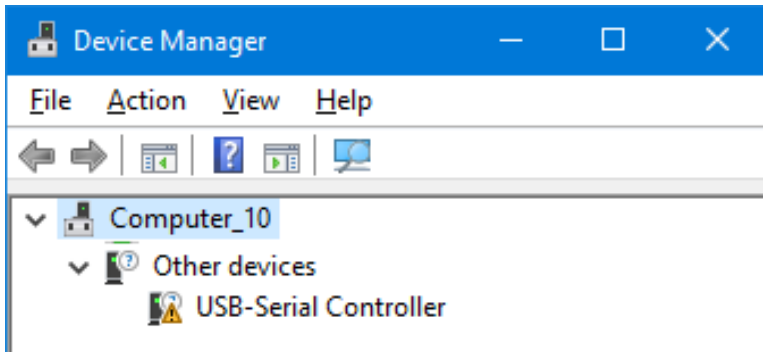
ADS-1PS



INSTALLATION PROCEDURE

1. Connect the adapter to the PC's USB port, it will be detected automatically (**Fig. 1**).

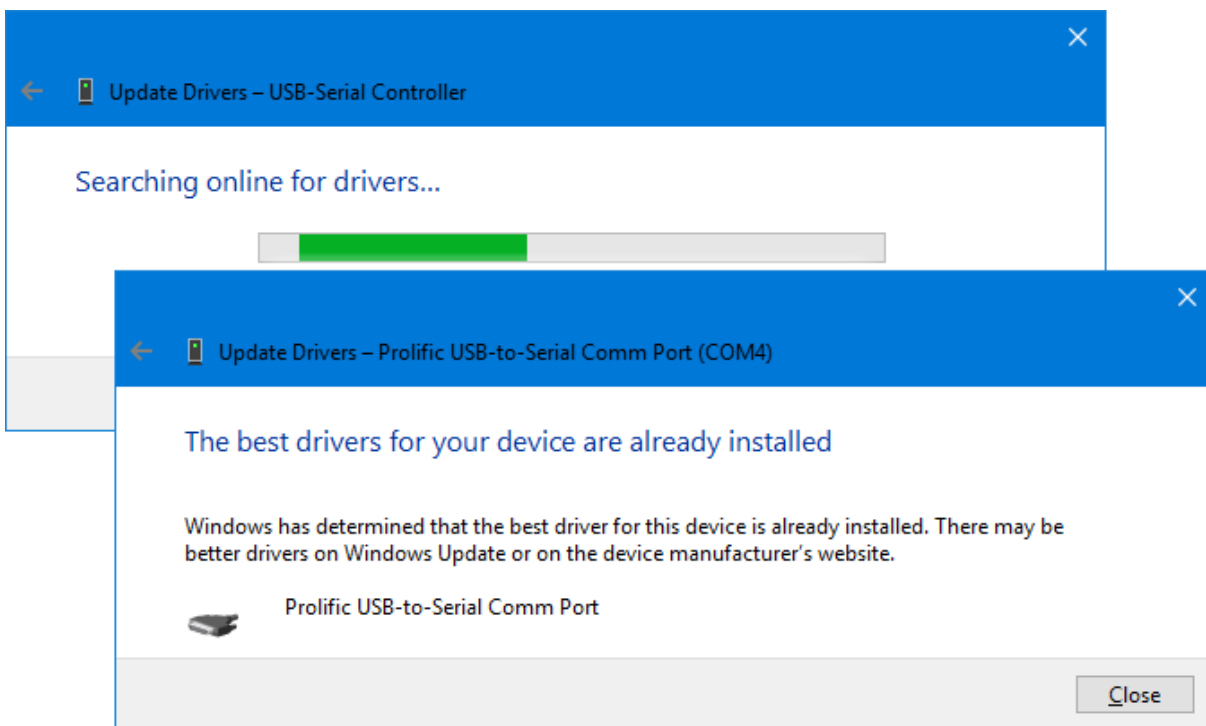
FIGURE 1. Detecting the ADS-1PS adapter in Windows 10.



2. The required driver will be automatically downloaded from Windows Update.

3. You can also update it manually in "Device Manager" and automatically search for it (**Fig. 2**).

FIGURE 2. Searching for and updating driver software in Windows 10.



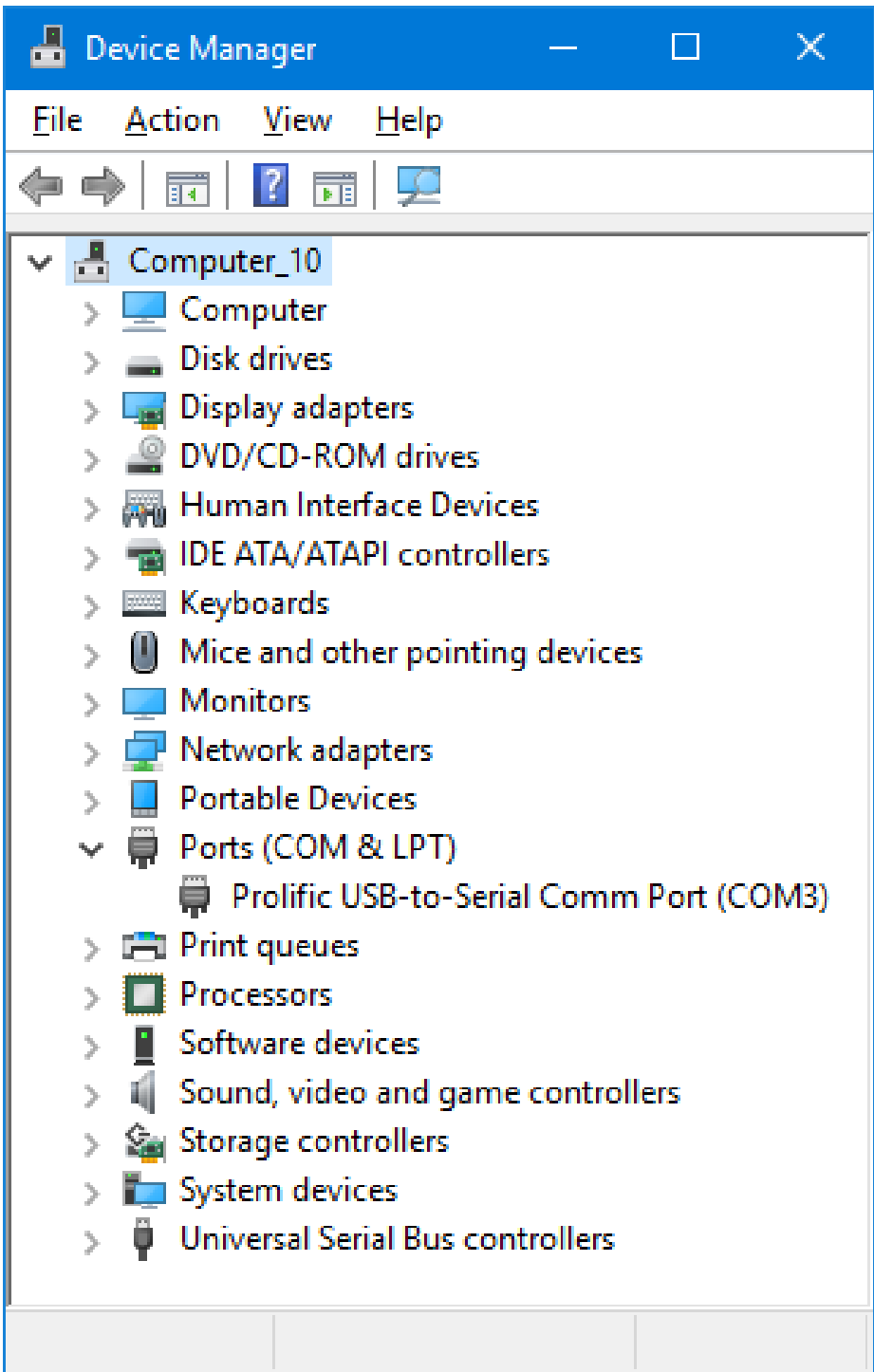
4. You can also install the driver software manually.

5. Download the latest driver from www.axagon.eu. When the download is complete, expand the downloaded file and run PL2303_Prolific_DriverInstaller.exe from the folder: Windows.

6. In "Device Manager", please check the correct installation (**Fig. 3**).



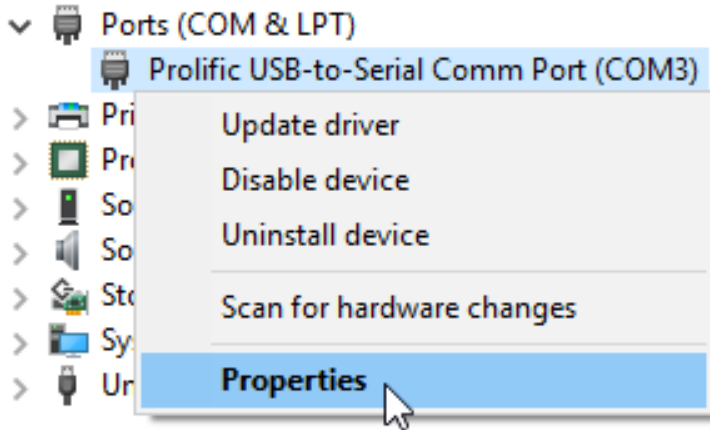
FIGURE 3. Verifying successful installation in “Device Manager” (Windows 10).



SETTING THE SERIAL PORT

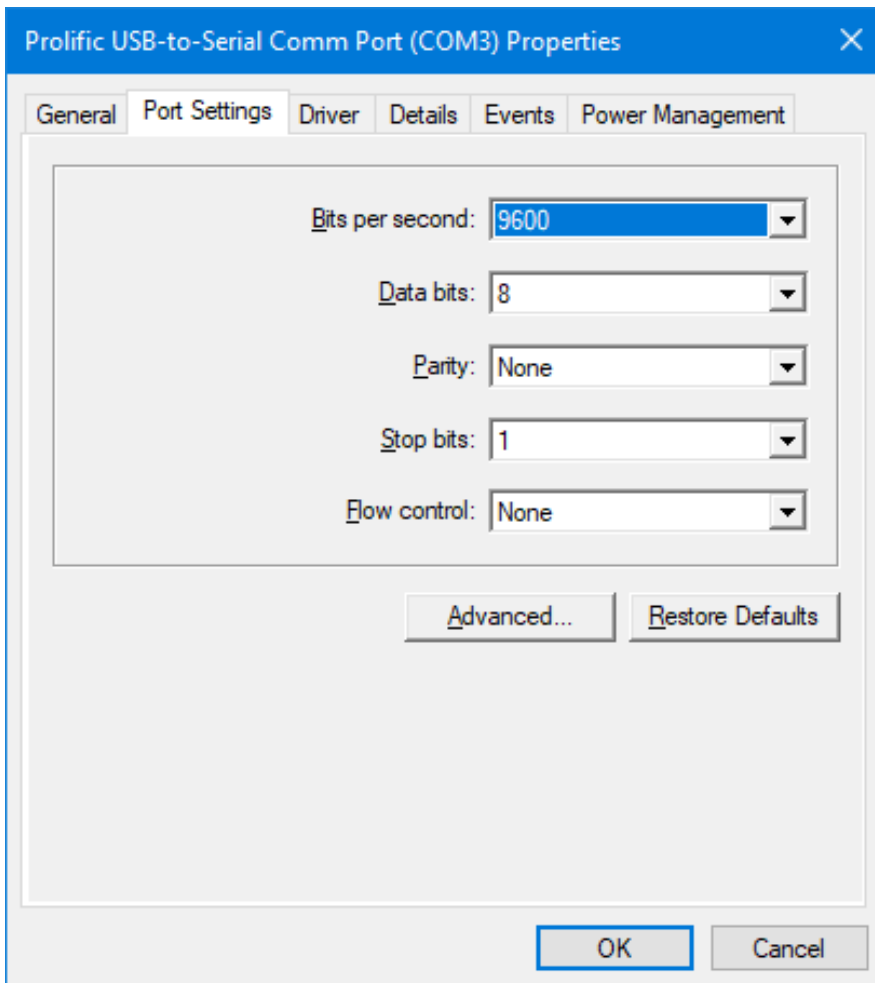
1. In “Device Manager”, right-click “Prolific USB-to-Serial Comm Port” and select “Properties” (Fig. 4) from the menu.

FIGURE 4. Setting the serial port properties in Windows 10.



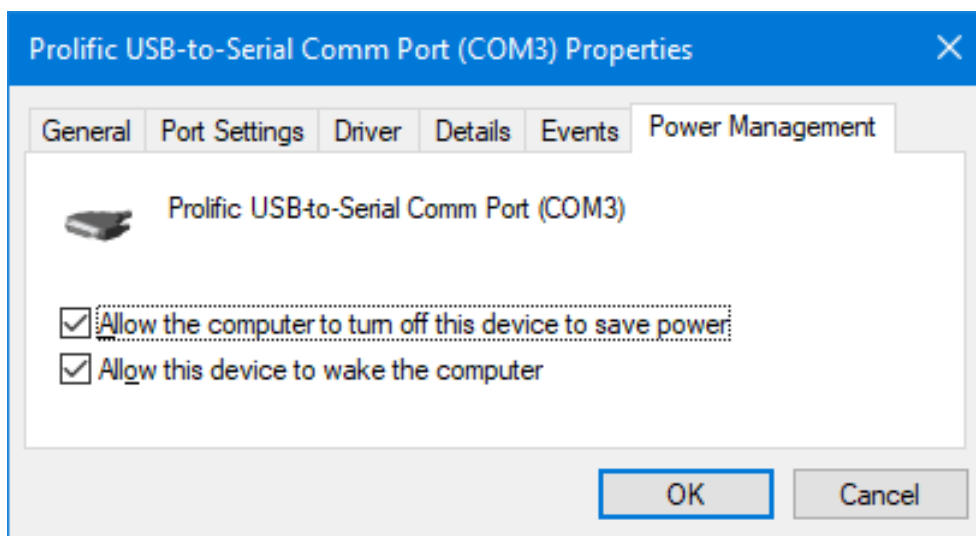
2. In the Serial Port Properties window, select the Port Settings tab to set its speed, word length, parity, stop-bits, and flow control (Fig. 5, Fig. 8).

FIGURE 5. Setting the serial port properties in Windows 10.



3. On the “Power Management” tab, you can set the system standby and remote “Wake up” of your computer (Fig. 6).

OBRÁZEK 6. Setting the serial port properties in Windows 10.



4. You can change the COM port number by clicking the Advanced button (Fig. 7).

FIGURE 7. Setting the serial port properties in Windows 10.

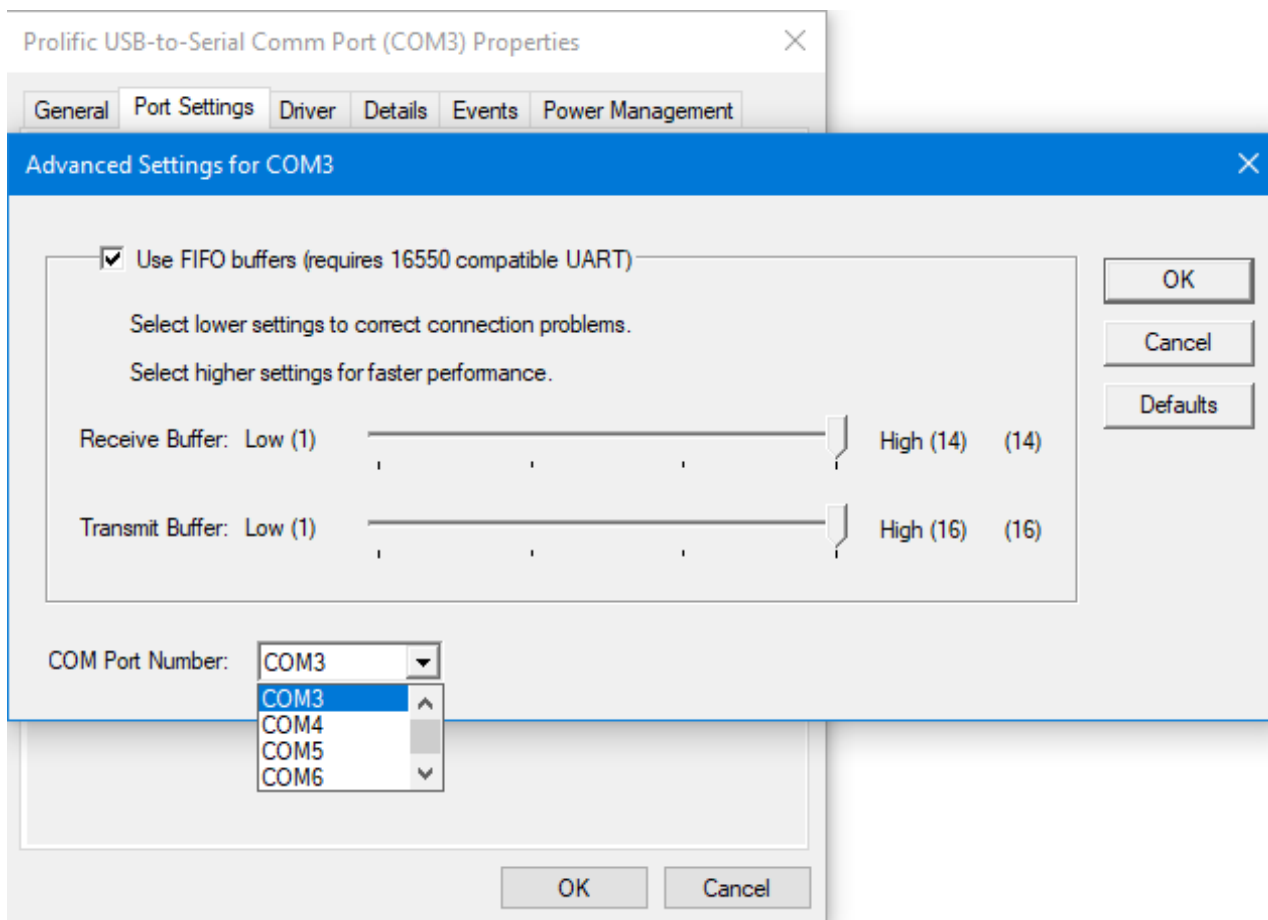
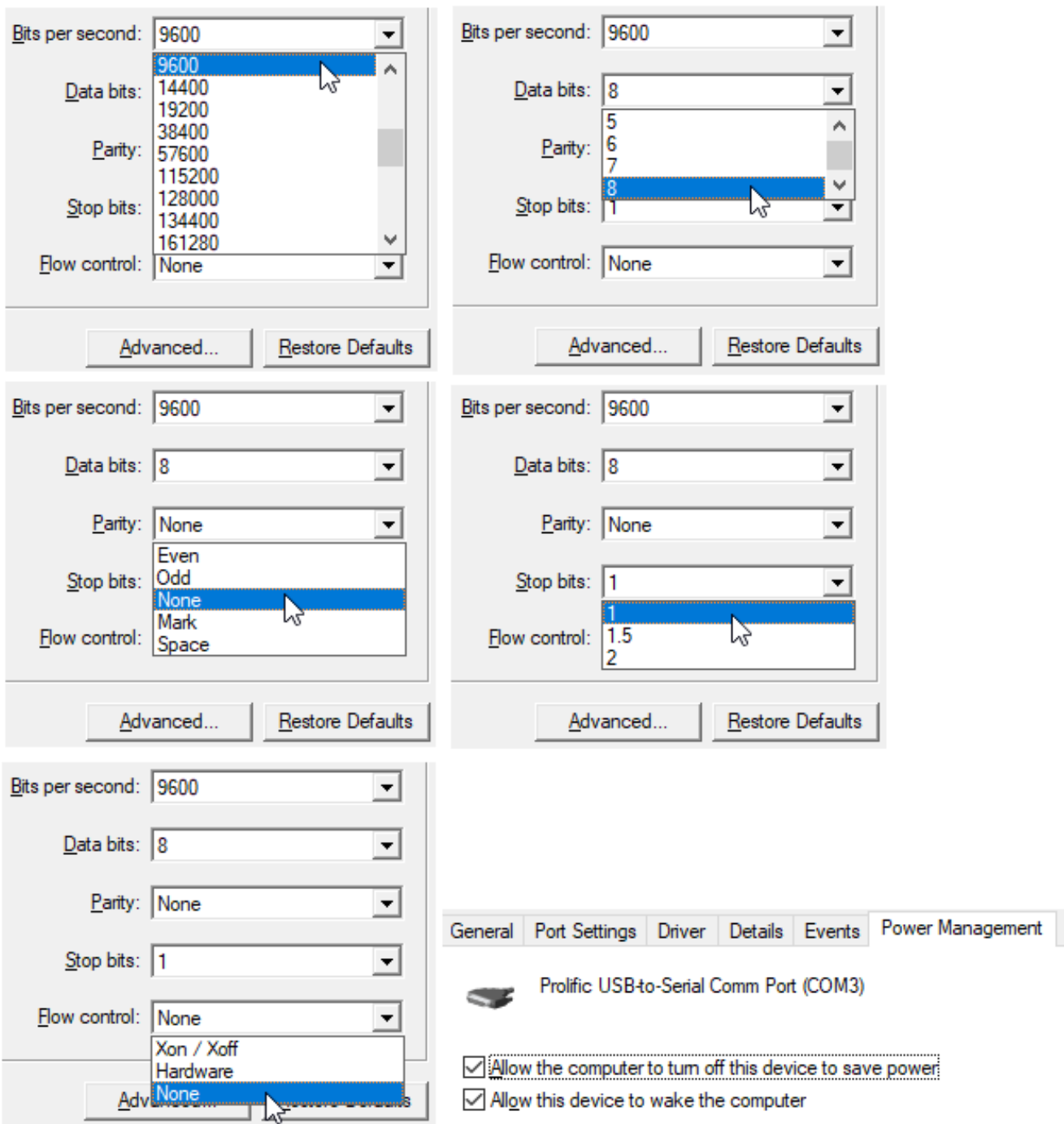


FIGURE 8. Advanced settings for the serial port properties in Windows 10.



WARRANTY CONDITIONS

All AXAGON products have a warranty period of 24 months from the date of receipt of the product by the buyer.

Warranty claims can only be applied to the AXAGON dealer who has supplied the buyer with the device.

The goods must be supplied complete with the claim including, in particular, power adapters, cables, reductions, media with controls and other accessories, preferably in the original packaging.

TECHNICAL SUPPORT

If you have any technical problems with your device, you need more information or technical advice, drivers are missing, etc., visit the AXAGON website at www.axagon.eu first.

If you do not find a satisfactory answer here, you can contact our technical support. For technical questions, use the address: support@axagon.cz.

AXAGON®

© 2017 AXAGON Czech Republic. All rights reserved.
All brands and product names are registered trademarks of their respective owners.
Specifications are subject to change without prior notice.

201810REV3.0

