

AXAGON

USER MANUAL

USB **PARALLEL** PRINTER **ADAPTER**

ADP-1P36



The AXAGON ADP-1P36 USB printer adapter easily connects a printer with parallel port to the USB port of your computer or laptop. High quality double-shielded USB cable ensures stable data transmissions without interference. Very durable adapter body is suitable even for industrial applications.

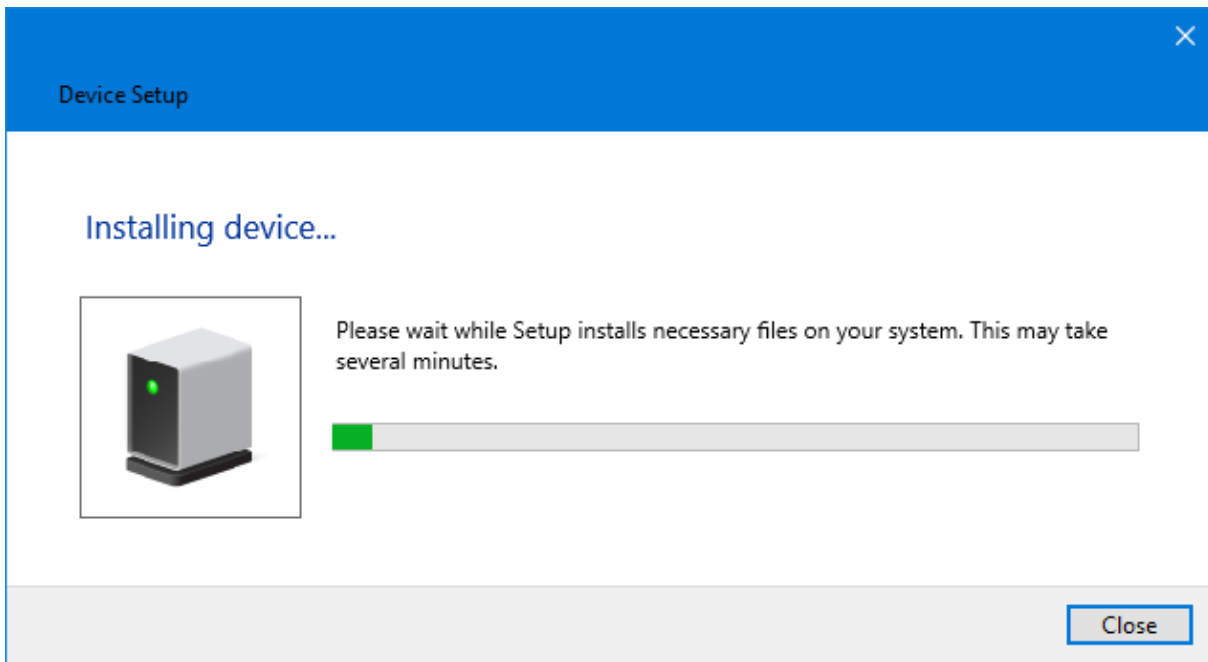
Installing the adapter drivers is completely automatic because they are already a standard part of Windows, Mac OS, or Linux operating systems. This will create a printing support via USB bus also for LPT-enabled printers. The user only installs drivers for the connected printer, if necessary.



INSTALLATION PROCEDURE - AUTOMATICALLY

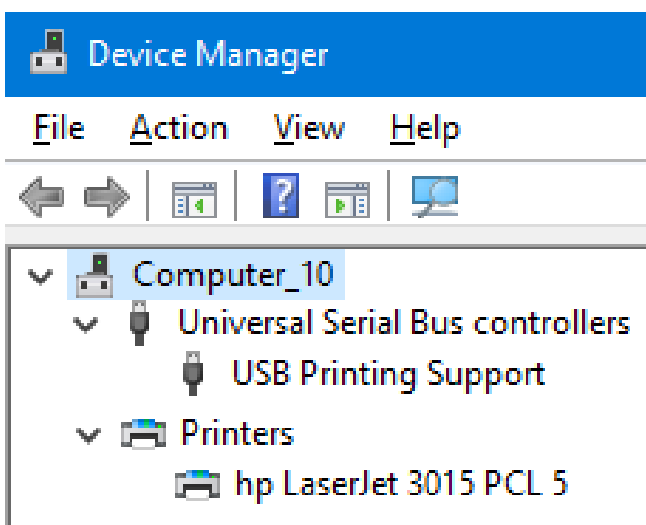
1. Connect the adapter to the parallel connector of your printer and turn it on.
2. Connect the adapter to the PC's USB port, it will be installed automatically.
- 3 No drivers need to be installed, they are part of the supported operating systems.
4. In most cases, Windows detects the printer and automatically downloads the required driver (Fig. 1).

FIGURE 1. Installing the printer driver from Windows Update.



5. In Device Manager, please check the successful installation of the driver (Fig. 2).

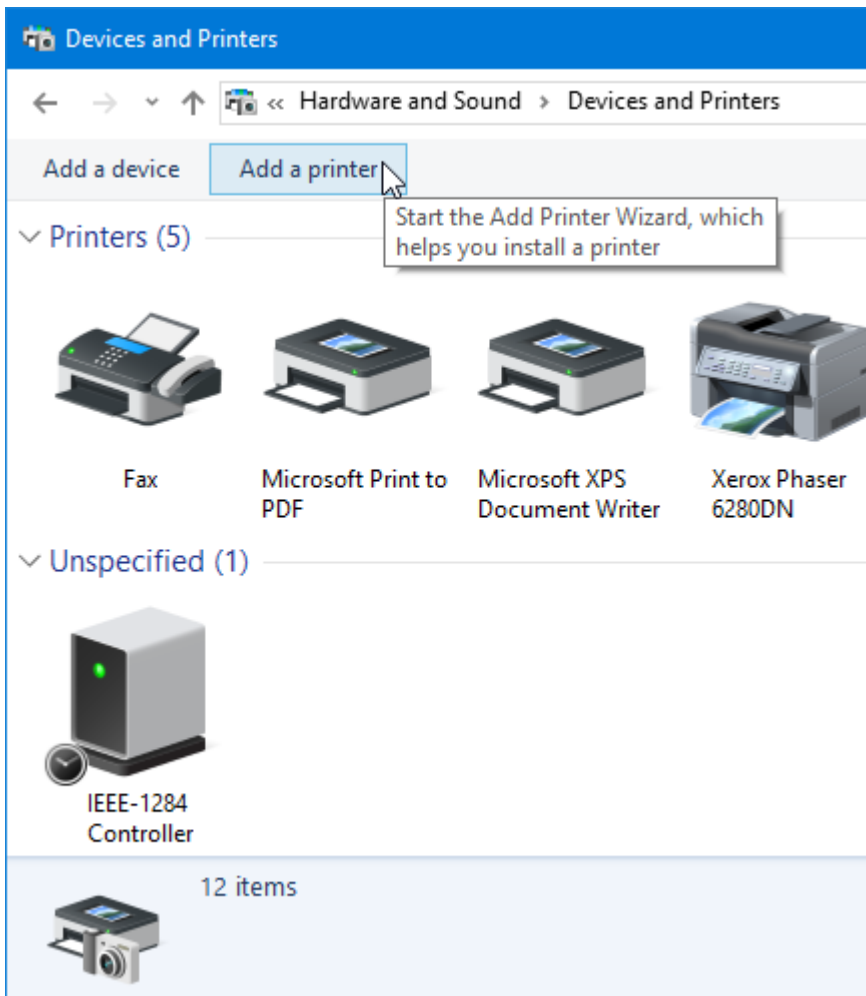
FIGURE 2. Verifying successful installation in Device Manager in Windows 10.



INSTALLATION PROCEDURE - SELECTING THE PRINTER MANUALLY

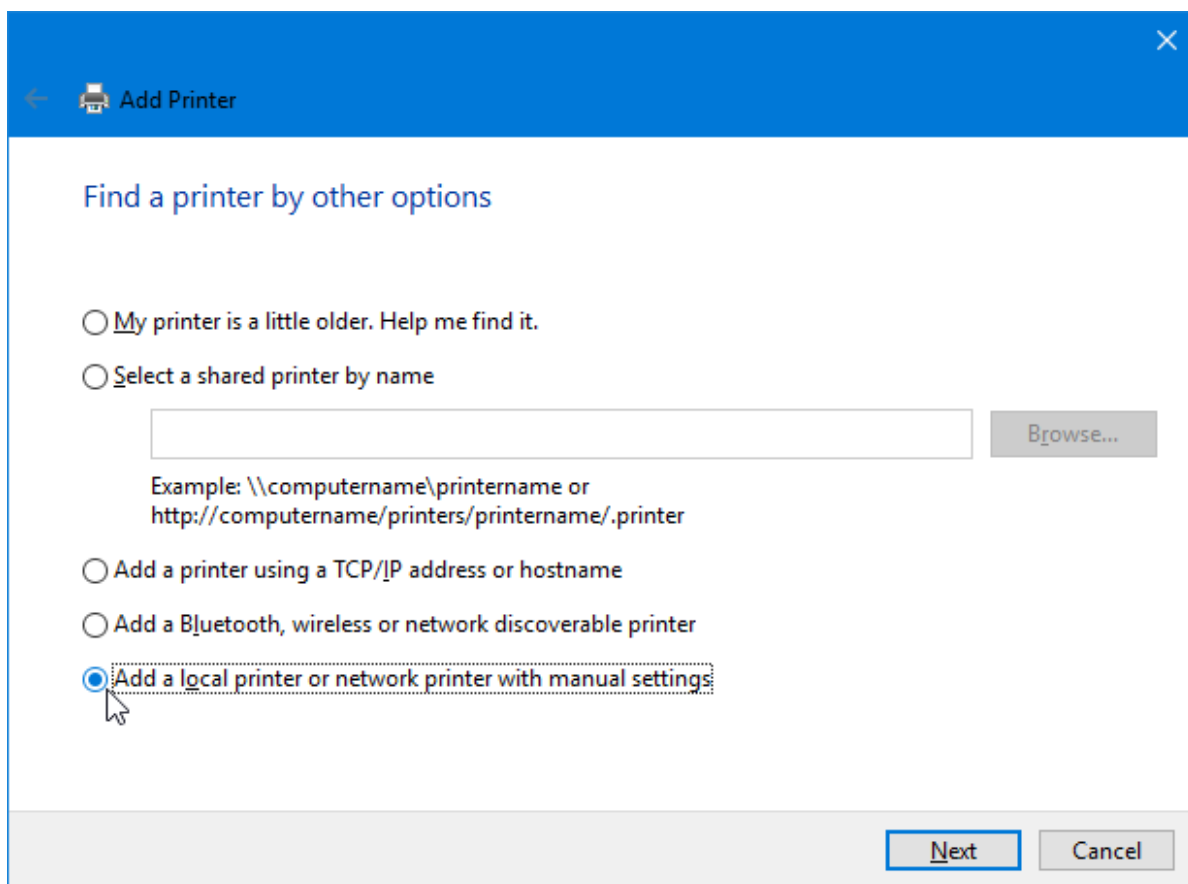
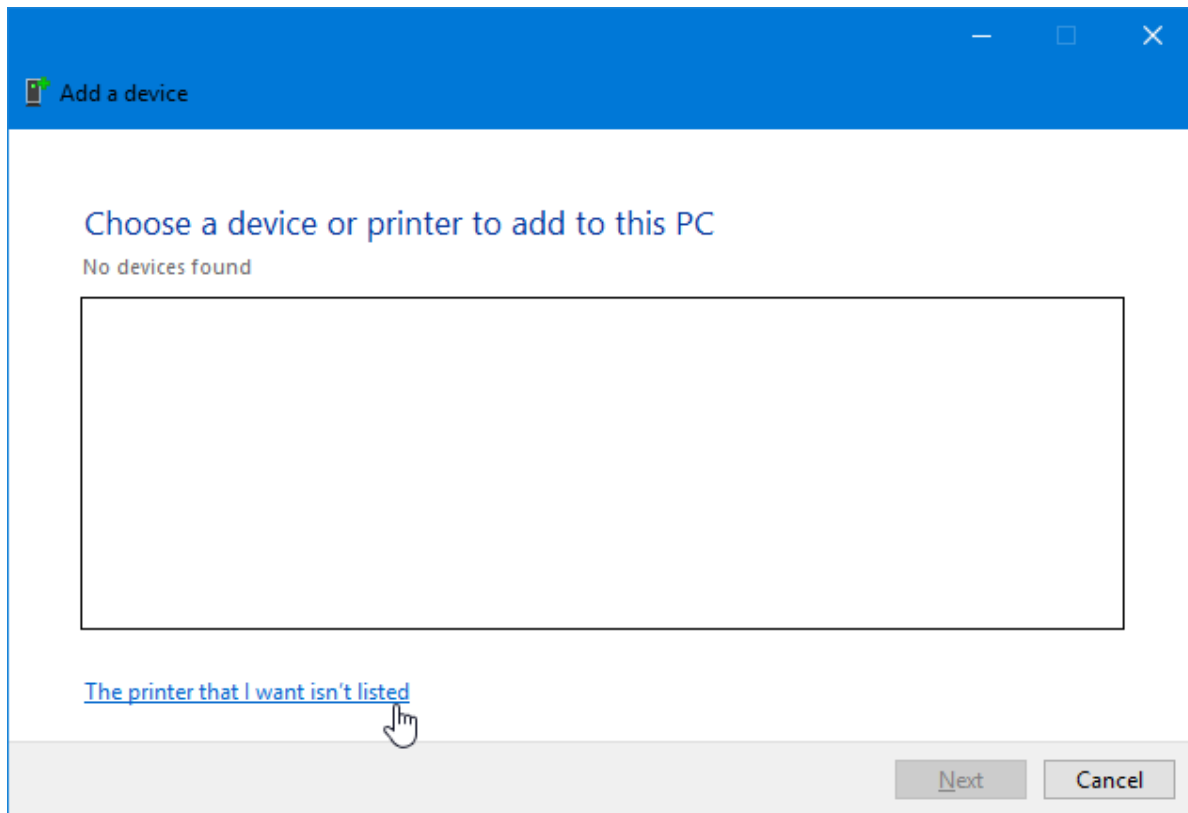
1. Connect the adapter to the PC's USB port, it will be installed automatically.
2. No drivers need to be installed, they are part of the supported operating systems.
3. Connect the adapter to the parallel connector of your printer and turn it on.
4. Click "Start" – "Control Panels" – "Hardware and Sound" – "Devices and Printers" – "Add a device" (Fig. 3).

FIGURE 3. Adding a new printer in Windows 10.



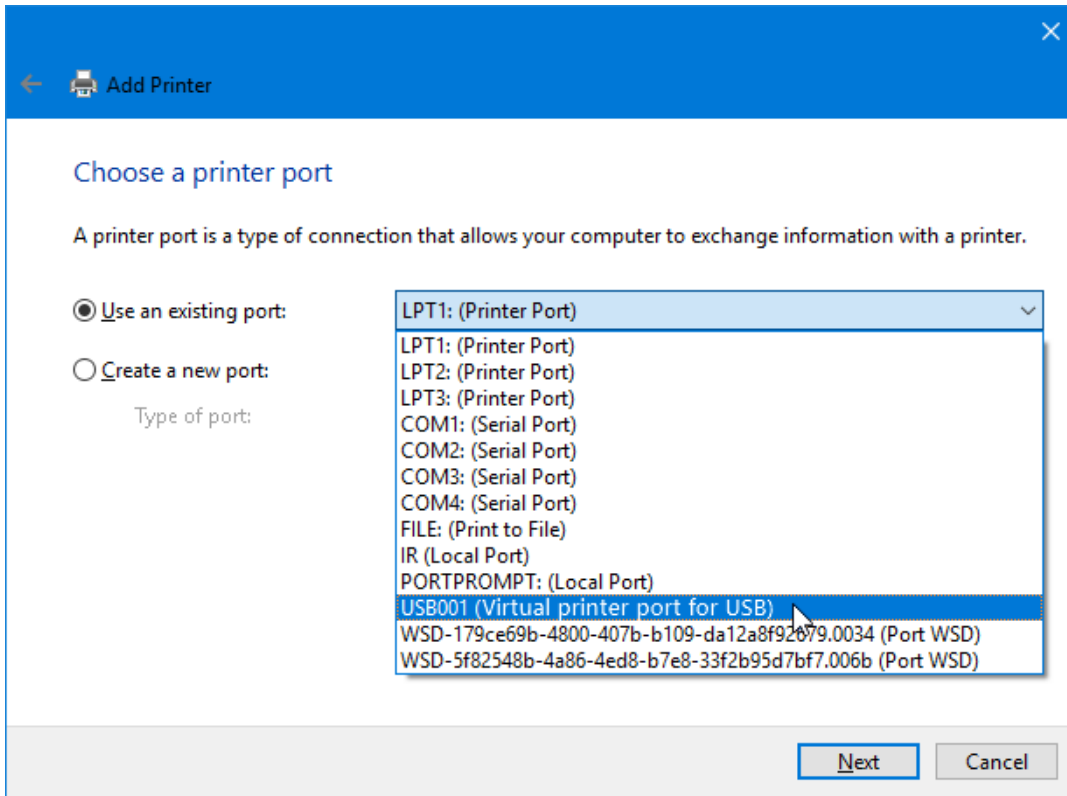
5. Choose the device or printer you want to add to this computer (Fig. 4).

FIGURE 4. Adding a new printer in Windows 10.



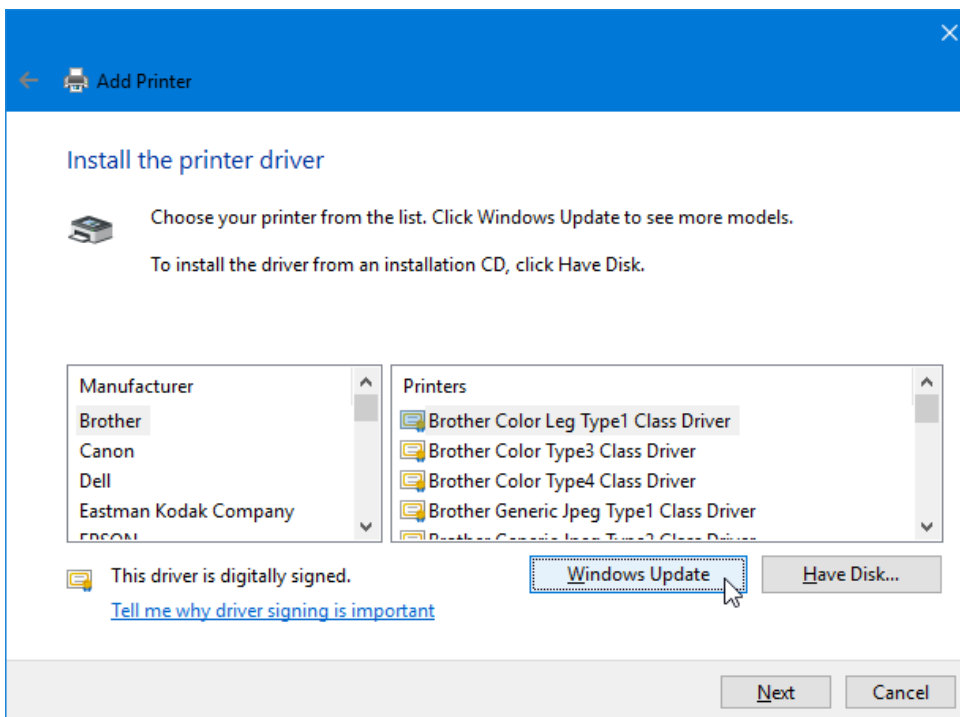
6. From the available ports, select USB0xx (Virtual Printer Port for USB) according to (Fig. 5).

FIGURE 5. Choosing a printer port in Windows 10.



7. Select the printer driver from the list, locate it on the printer CD or using Windows Update (Fig. 6).

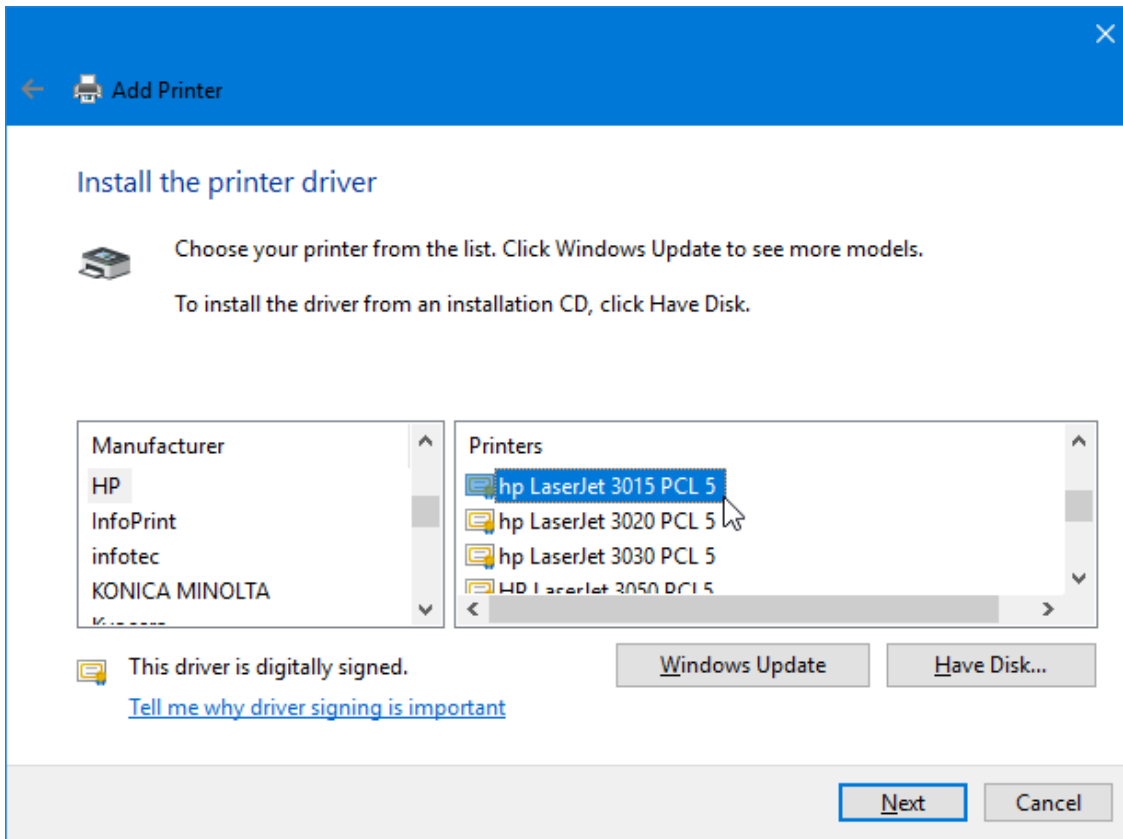
FIGURE 6. Installing the printer driver in Windows 10.



8. When you search for a driver using Windows Update (recommended) - Windows updates the list of printers. This operation may take several minutes.

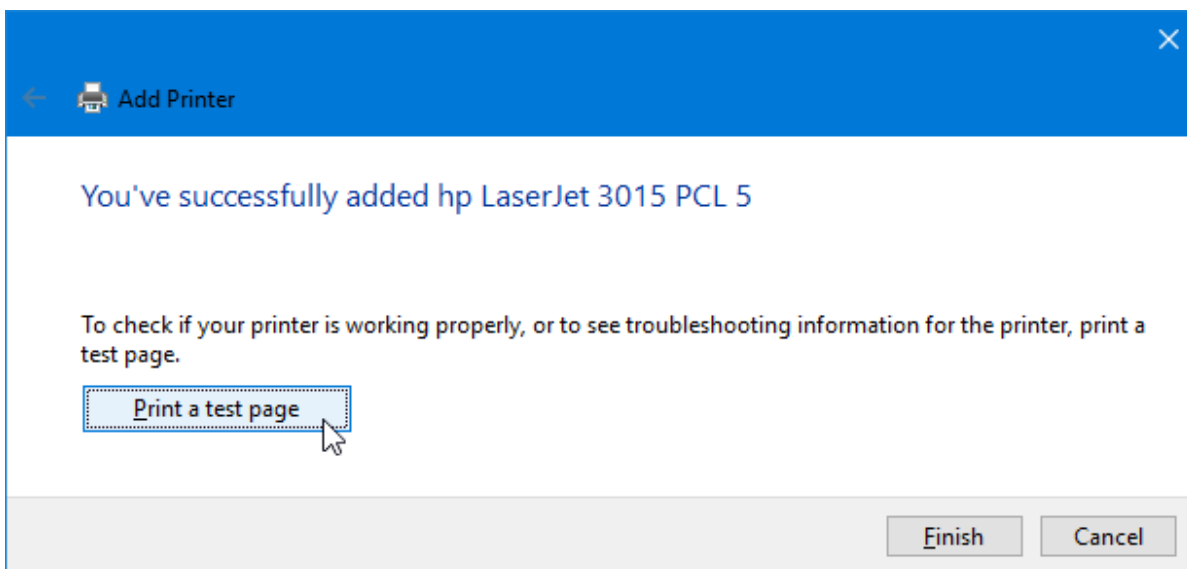
9. Then select the printer from the updated list (**Fig. 7**).

FIGURE 7. Installing the printer driver in Windows 10.



10. Complete the installation and print a test page to verify the correct installation (**Fig. 8**).

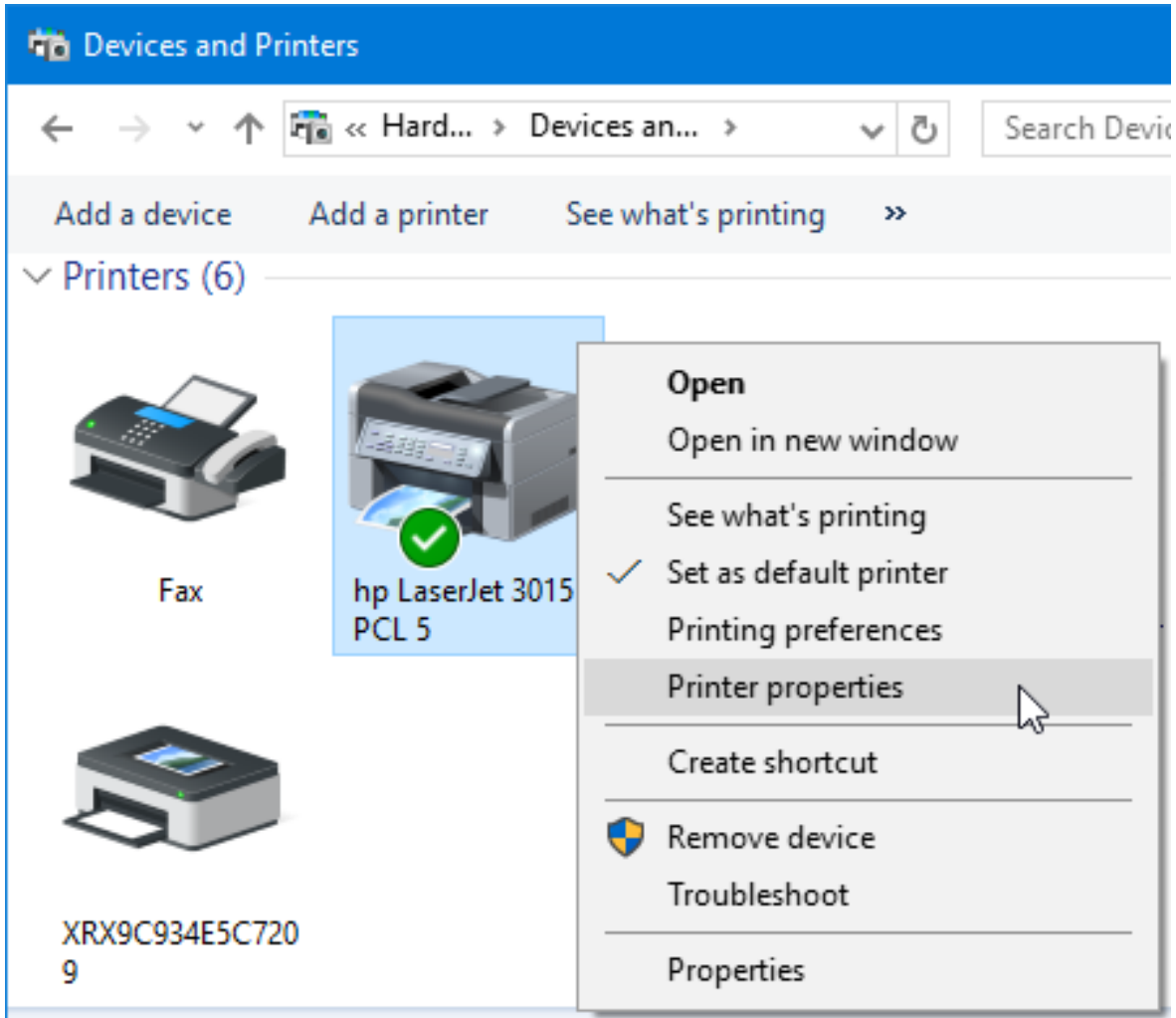
FIGURE 8. Installing the printer driver in Windows 10.



SETTING UP YOUR ALREADY INSTALLED PRINTER

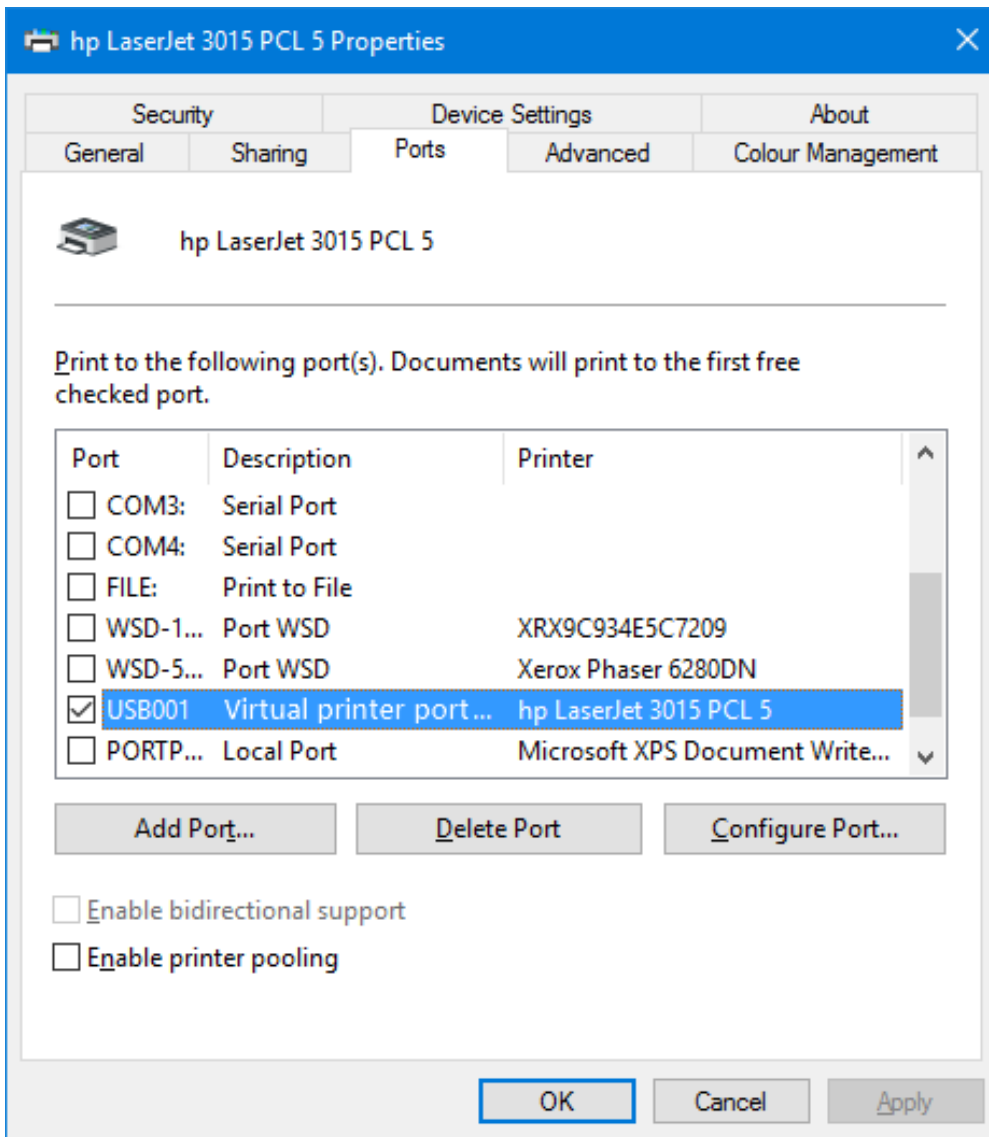
1. Click "Start" – "Control Panels" – "Hardware and Sound" – "Devices and Printers".
2. Right-click the printer and select "Printer properties" (Fig. 9).

FIGURE 9. Setting printer properties in Windows 10.



3. Open the Ports tab and select USB0xx (Virtual Printer Port for USB) according to (Fig.10).

FIGURE 10. Setting printer properties in Windows 10.



4. If you connect the printer to another USB port of your computer in the future, you will need to change the USB0xx port in the printer settings as described above and disconnect and reconnect the ADP-1P36 adapter.



WARRANTY CONDITIONS

All AXAGON products have a warranty period of 24 months from the date of receipt of the product by the buyer.

Warranty claims can only be applied to the AXAGON dealer who has supplied the buyer with the device.

The goods must be supplied complete with the claim including, in particular, power adapters, cables, reductions, media with controls and other accessories, preferably in the original packaging.

TECHNICAL SUPPORT

If you have any technical problems with your device, you need more information or technical advice, drivers are missing, etc., visit the AXAGON website at www.axagon.eu first.

If you do not find a satisfactory answer here, you can contact our technical support. For technical questions, use the address: support@axagon.cz.

201810REV2.0

AXAGON®

© 2017 AXAGON Czech Republic. All rights reserved.
All brands and product names are registered trademarks of their respective owners.
Specifications are subject to change without prior notice.

